



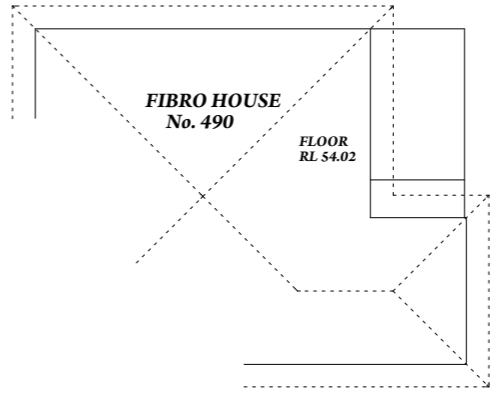
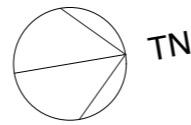
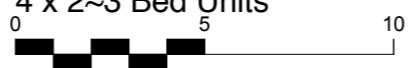
Stafford Court Box Road Elevation (North)





Stafford Court Ground Floor Plan

3 x 1~2 Bed Units
4 x 2~3 Bed Units



Drainage Easement 1200mm Wide
269° 53' 20" 12.92

Drainage Easement 1200mm Wide

Box Rd

Security gate to 2100mm
Intercom to all units for remote opening

Gazebo
RL 54.27

Landing
RL 54.27

Lobby
RL 54.32

Landing
RL 54.27

Landing
RL 55.55

Lobby
RL 55.6

Landing
RL 53.94

Landing
RL 53.87

Landing
RL 53.87

Therapy /
Common Room
RL 55.15

Level Ramp

Driveway

Unit 8
Living / Dining
89m²
RL 54.72

Unit 9
Living / Dining
104m²

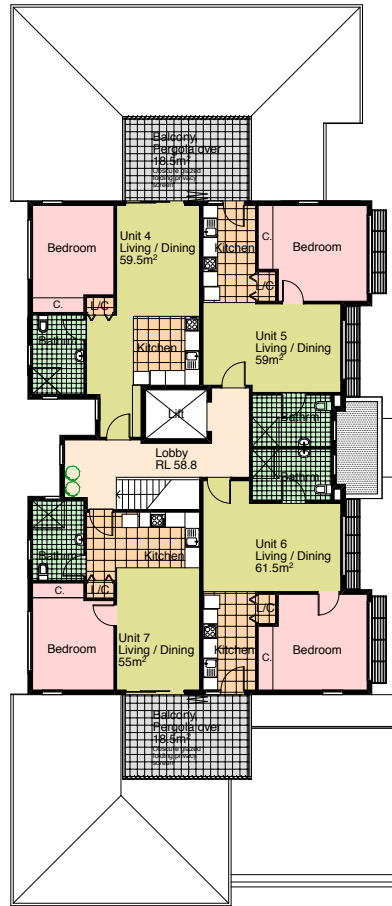
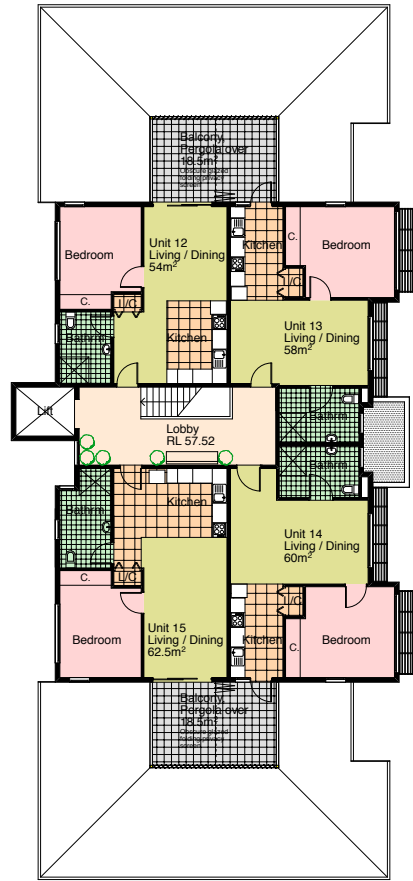
Unit 10
Living / Dining
108m²

Unit 11
Living / Dining
89m²
RL 53.92

Unit 1
Living / Dining
89m²
RL 56

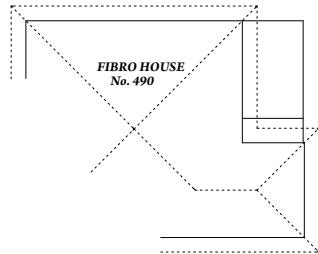
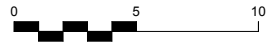
Unit 2
Living / Dining
108m²

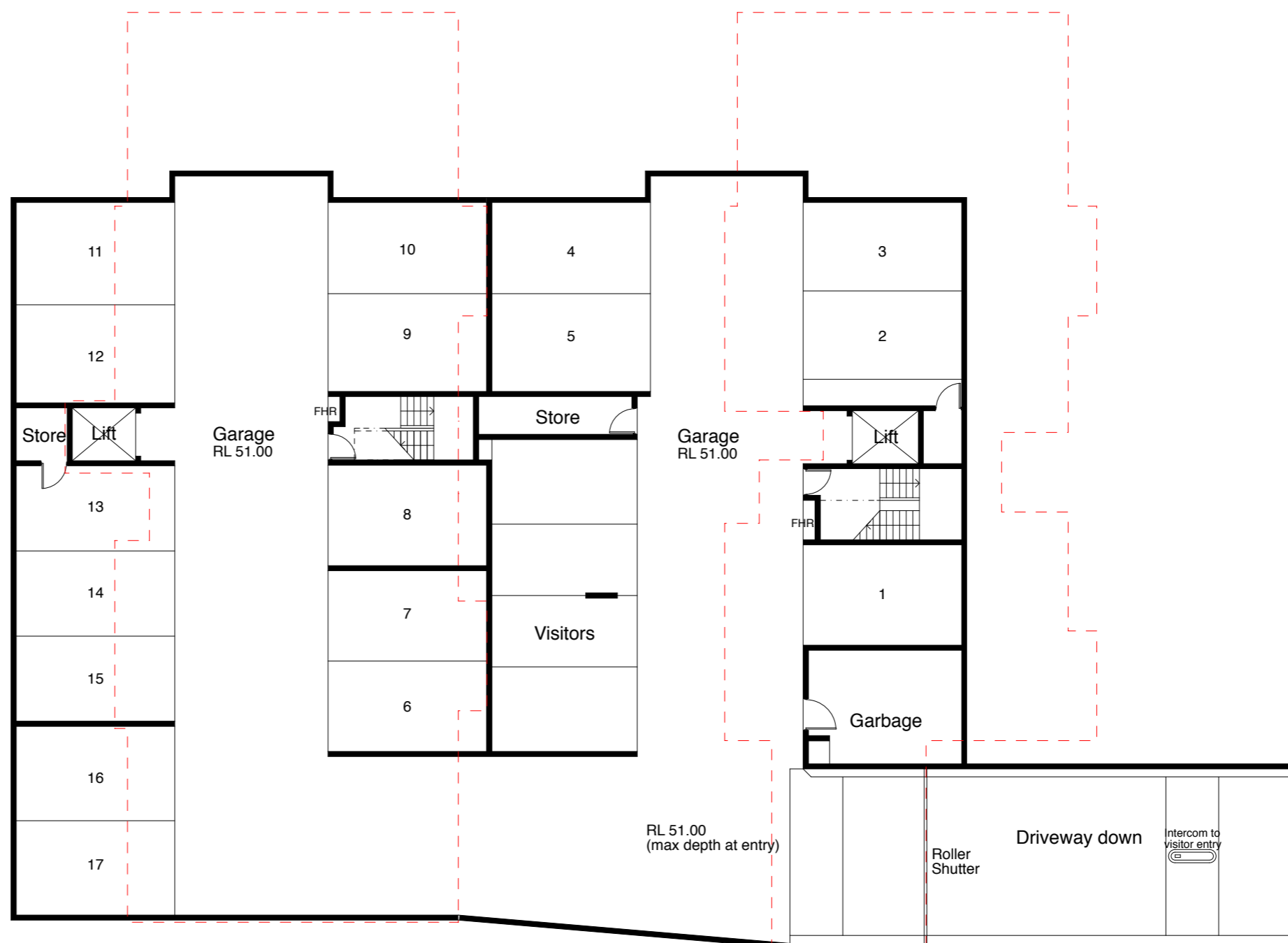
Unit 3
Living / Dining
106m²



Box Rd

Stafford Court
First Floor Plan
 8 x 1 Bed Units





Box Rd

269° 53' 20" 12.92

**Stafford Court
Garage Floor Plan**
17 x Single Spaces
4 x Visitor Spaces

